



MYOBLOC®

rimabotulinumtoxinB  
Injection [5,000 Units/mL]

Patient Brochure  
Cervical Dystonia

# ARE YOU EXPERIENCING NECK PAIN OR POSTURE MISALIGNMENT?

Imagine what symptom relief could mean for you.

Not actual patient.



## What is MYOBLOC?

MYOBLOC® is a prescription medicine used in adults that is injected into muscles and used to treat the abnormal head position and neck pain that happens with cervical dystonia (CD).

## IMPORTANT SAFETY INFORMATION

### What is the most important information I should know about MYOBLOC?

**MYOBLOC may cause serious side effects that can be life threatening. Call your doctor or get medical help right away if you have any of these problems after treatment with MYOBLOC:**

- **Problems swallowing, speaking, or breathing.** These problems can happen hours to weeks after an injection of MYOBLOC if the muscles that you use to breathe and swallow become weak and death can happen if you have severe problems.
  - People with breathing problems who use muscles in their neck to help them breathe may be at greater risk.
  - Swallowing problems may last several months and require a feeding tube. If severe, food or liquids may go into your lungs. People who already have swallowing or breathing problems are at highest risk.
- **Spread of toxin effects.** In some cases, botulinum toxin may affect areas of the body away from the injection site and cause symptoms of botulism which include: loss of strength and muscle weakness all over the body; trouble saying words clearly (dysarthria); double vision; loss of bladder control; blurred vision and drooping eyelids; trouble breathing; hoarseness or change or loss of voice (dysphonia); trouble swallowing (dysphagia).

**These symptoms can happen hours to weeks after you receive an injection of MYOBLOC.**

These problems could make it unsafe for you to drive a car or do other dangerous activities.

Please see [Medication Guide](#) and additional Important Safety Information throughout.

INTRODUCTION

CERVICAL DYSTONIA OVERVIEW

CERVICAL DYSTONIA IMPACT & WHY MYOBLOC?

QUESTIONNAIRE

# A PAINFUL REALITY, CERVICAL DYSTONIA (CD) IS UNDERRECOGNIZED

## WHAT IS CD?

**CD, also called spasmodic torticollis, is a neurological movement disorder that causes muscles in your neck to contract (tighten) involuntarily.**

This muscle tightening can cause you to hold your head and neck in painful, abnormal positions.

These painful, abnormal head positions can cause discomfort and challenges in your everyday life.

## Many patients with CD suffer a delayed diagnosis



**Several studies reported that patients with CD had visited ~3 or more physicians before a CD diagnosis was made.**



The average time from symptom onset to diagnosis can take up to **3.8 years**.

## IMPORTANT SAFETY INFORMATION (cont'd)

### Do not receive MYOBLOC® (rimabotulinumtoxinB) if you:

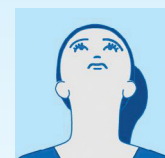
- are allergic to MYOBLOC or any of the ingredients in MYOBLOC.
- had an allergic reaction to any other botulinum toxin product such as BOTOX®, BOTOX® Cosmetic (onabotulinumtoxinA), DYSPORT® (abobotulinumtoxinA), or XEOMIN® (incobotulinumtoxinA).
- have a skin infection at the planned injection site.

# SYMPTOM RECOGNITION OFTEN REPRESENTS THE FIRST STEP TOWARD TREATMENT

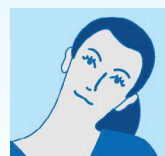
## MOST COMMON POSTURES ASSOCIATED WITH CD



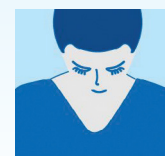
TORTICOLLIS  
(rotation)



RETROCOLLIS  
(extension)



LATEROCOLLIS  
(lateral tilt)



ANTEROCOLLIS  
(flexion)

## Symptoms of CD include:

- Abnormal and painful turning of the head and neck
- Increasing neck muscle tightness or spasms
- Neck pain
- Uncomfortable pulling in the neck
- Tremors of the head and neck
- Limited range of motion

## IMPORTANT SAFETY INFORMATION (cont'd)

**Before receiving MYOBLOC, tell your doctor about all your medical conditions, including if you have:**

a disease that affects your muscles and nerves (such as amyotrophic lateral sclerosis [ALS or Lou Gehrig's disease], myasthenia gravis or Lambert-Eaton syndrome); had any side effect from any botulinum toxin product in the past; a breathing problem, such as asthma or emphysema; a history of swallowing problems or inhaling food or fluid into your lungs (aspiration); bleeding problems; drooping eyelids; plans to have surgery; had surgery on your face.

**Please see [Medication Guide](#), including Warning, and additional Important Safety Information throughout.**

## CD AFFECTS THOUSANDS OF PEOPLE

### MANY PATIENTS WITH CD EXPERIENCE PAIN



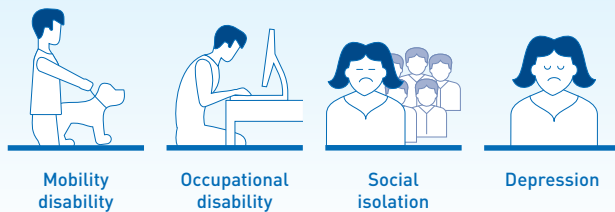
Up to 75% of patients with CD suffer from neck pain.



Nearly  
**7 OUT OF 10**  
patients report their pain as being moderate or severe.

### CD may have a significant impact\*

#### CD MAY LEAD TO:



\*There are no studies showing that treating CD affects the specific outcomes above.



Scan the QR code for ways to talk to your doctor about your symptoms.

## WHY MYOBLOC® (rimabotulinumtoxinB)?



The first botulinum toxin therapy approved by the FDA for the treatment of CD.

- In clinical studies, MYOBLOC showed improvement of posture and reduction in pain
- The duration of effect of MYOBLOC has been observed in CD studies to be between 12 and 16 weeks<sup>†</sup>

<sup>†</sup>Subsequent dosing should be determined by the patient's individual response.

MYOBLOC is a well-studied neurotoxin that has a strong legacy for the treatment of CD.

- **December 8, 2000:**  
MYOBLOC becomes the first FDA-approved neurotoxin for the treatment of CD
- **Today:**
  - MYOBLOC has demonstrated efficacy in 11 clinical trials for CD
  - MYOBLOC has demonstrated tolerability for CD

### IMPORTANT SAFETY INFORMATION (cont'd)

#### Tell your doctor if you:

- are pregnant or plan to become pregnant. It is not known if MYOBLOC can harm your unborn baby.
- are breastfeeding or plan to breastfeed. It is not known if MYOBLOC passes into breast milk.

**Tell your doctor about all the medicines you take**, including prescription and over-the-counter medicines, vitamins and herbal supplements. **Talk to your doctor before you take any new medicine after you receive MYOBLOC.**

Please see [Medication Guide](#), including Warning, and additional Important Safety Information throughout.

## RECOGNIZE AND RECORD YOUR SYMPTOMS AND EXPERIENCE

- Do you experience muscle pain or stiffness in your neck?  
 Yes       No
- Does your head tilt or shift unintentionally in any direction, such as your chin or ear pointing toward your shoulder?  
 Yes       No
- Do your shoulders unintentionally lift or pull?  
 Yes       No
- Does your head shake or jerk?  
 Yes       No
- Are there times when your head or neck position makes you feel embarrassed or self-conscious?  
 Yes       No
- Have you ever been diagnosed with CD?  
 Yes       No
- Have you ever received treatment for CD with botulinum toxin?  
 Yes       No


**If you answered Yes to any of these questions, talk to your healthcare provider about whether MYOBLOC® (rimabotulinumtoxinB) may be right for you.**

## NOTES:

### IMPORTANT SAFETY INFORMATION (cont'd)

Using MYOBLOC with certain other medicines may cause serious side effects. **Do not start any new medicines until you have told your doctor that you have received MYOBLOC in the past. Especially tell your doctor if you:** have received any other botulinum toxin product in the last 4 months; have received injections of botulinum toxin such as BOTOX®, BOTOX® Cosmetic (onabotulinumtoxinA), DYSPORT® (abobotulinumtoxinA), or XEOMIN® (incobotulinumtoxinA) in the past. Be sure your doctor knows exactly which product you received; have recently received an antibiotic by injection; take muscle relaxants; take an allergy or cold medicine; take a sleep medicine.

**Please see [Medication Guide](#), including Warning, and additional Important Safety Information throughout.**



MYOBLOC®  
rimabotulinumtoxinB  
Injection [5,000 Units/mL]



Not actual  
patient.

## TALK TO YOUR DOCTOR TO SEE IF MYOBLOC IS THE RIGHT TREATMENT FOR YOU.

### IMPORTANT SAFETY INFORMATION (cont'd)

#### What should I avoid while receiving MYOBLOC?

MYOBLOC may cause loss of strength or general muscle weakness or vision problems within hours to weeks of receiving MYOBLOC. **If this happens, do not drive a car, operate machinery or do other dangerous activities.**

#### What are the possible side effects of MYOBLOC?

##### MYOBLOC can cause serious side effects including:

- allergic reactions. Symptoms of an allergic reaction to MYOBLOC may include: itching, rash, redness, swelling, wheezing, trouble breathing, or dizziness or feeling faint. Tell your doctor or get medical help right away if you get wheezing, or trouble breathing, or if you get dizzy or faint.

**The most common side effects of MYOBLOC in people with cervical dystonia include** dry mouth; injection site discomfort or pain; trouble swallowing (dysphagia); headache.

These are not all the possible side effects of MYOBLOC. **Call your doctor for medical advice about side effects.**

**You are encouraged to report negative side effects of prescription drugs to the FDA. Visit [www.fda.gov/medwatch](http://www.fda.gov/medwatch) or call 1-800-FDA-1088.**

**Please see [Medication Guide](#), including Warning, for additional information and talk to your healthcare provider.**

MYOBLOC is a registered trademark of Solstice Neurosciences, LLC, a wholly-owned subsidiary of Supernus Pharmaceuticals, Inc. BOTOX trademarks owned by Allergan, Inc.

© 2022. Supernus Pharmaceuticals, Inc. MYO.2022-0069 12/22.



Supernus®  
Pharmaceuticals



MYOBLOC®  
rimabotulinumtoxinB  
Injection [5,000 Units/mL]